

IMF 30



2008-2014 SUBARU STI & 11-14 WRX HATCHBACK 4 POINTS MUD FLAP INSTALLATION INSTRUCTIONS

For high resolution color images of these instructions, please visit <http://www.rallyarmor.com>

To protect your Rally Armor mud flap set, care must be taken during parking and reversing.

Rally Armor is not responsible for damage or loss of installed flaps.



WARNING: ALWAYS USE CAUTION WHEN REVERSING.
RALLYARMOR IS NOT RESPONSIBLE FOR DAMAGE OR LOSS OF MUD FLAPS.



ALWAYS TEST COMPATIBILITY WITH YOUR SPECIFIC WHEEL, TIRE AND SUSPENSION COMBINATION

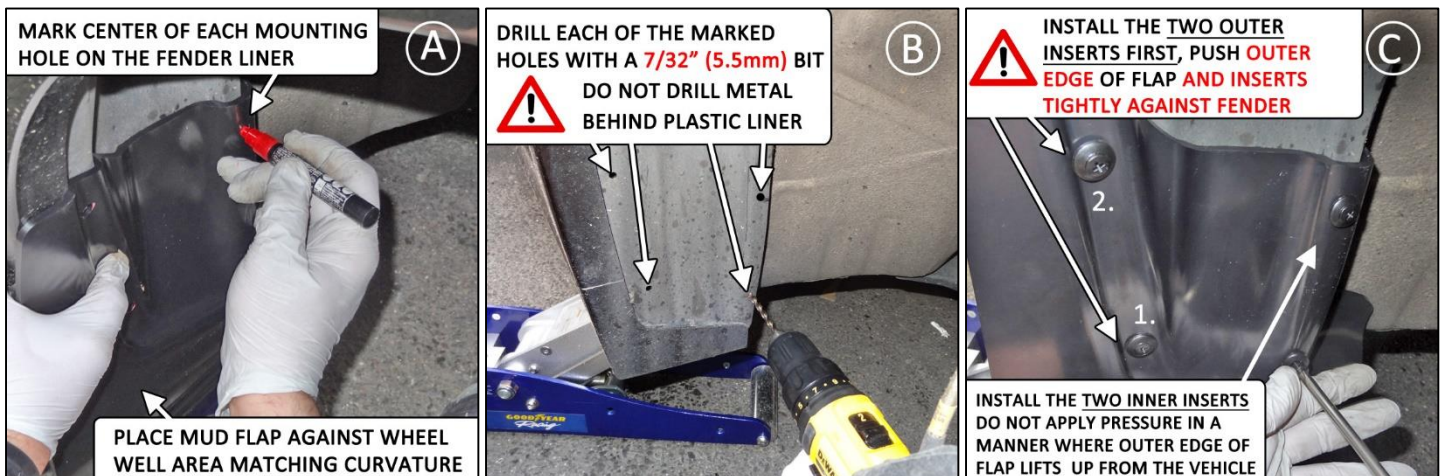
YOUR MOUNTING HARDWARE CONSISTS OF:				RECOMMENDED TOOLS:
Quantity	Hardware Item	Item ID	View	Recommended tools: Offset, ratcheting or stubby Phillips screwdriver, small flat head screwdriver, drill and bit assortment, marker. To the customer: Retain these instructions after installation. They may be necessary for installing other optional parts or removal of this accessory. To the installer: Please return these instructions to the customer after installation. Always test and check wheel clearance before returning vehicle
4	Flat U Clips	UClip		
8	Inserts	Ins6		
8	Screws	1SS		
4	Washers	SmWash		

FRONT MUD FLAPS- PLEASE READ THE INSTRUCTIONS THOROUGHLY

Figure A. -Remove front tire. Carefully place mud flap against vehicle in a manner where it matches the curvature of the wheel well and side skirt. Mark the center each of the mounting points with a marker.

Figure B. - Using a 7/32" (5.5mm) bit, drill a hole in each of the mounting points you have marked. **Create these holes in the plastic liner only, do not drill into the sheet metal of the vehicle.**

Figure C. - To ensure a flush fit on the outer edge of the vehicle. **Install the OUTER inserts first.** Lower insert first, then upper, pushing the mud flap tightly against the wheel well as the inserts are fastened. Install the two inner inserts afterwards. Do not apply pressure to the inside of the mud flap in a manner where the outer edge is lifted.



IMF 30

REAR MUD FLAPS- PLEASE READ THE INSTRUCTIONS THOROUGHLY

Figure D. -Remove rear tire. **Carefully** remove and retain factory fastener. You will be re-using this piece. Place two flat U-Clips over the two outer mounting holes in the bumper.

Figure E. - Place mud flap against vehicle in a manner where it matches the curvature of the wheel well and liner. Re-install factory fastener through mud flap into original mounting point. Thread a screw with washer through the two outer mud flap mounting points. Adjust mud flap to ensure it is perpendicular to the ground. Tighten only until snug. Do not over-tighten.

IMPORTANT TO RE-INSTALL FASTENER ON LINER THOUGH MUD FLAP

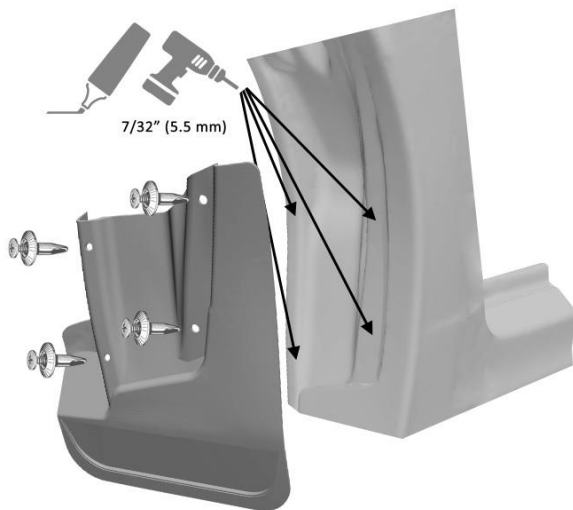
1. REMOVE INNER PORTION OF FASTENER
2. INSERT OUTER PORTION FLUSH INTO MOUNTING HOLE
3. PUSH INNER PORTION IN WITH FORCE UNTIL FLUSH



Figure F. – Using a Philips driver, install two screws (no washers) through the remaining mounting holes. The screws will self-tap and go into the plastic liner.



FRONT INSTALLATION



REAR INSTALLATION

